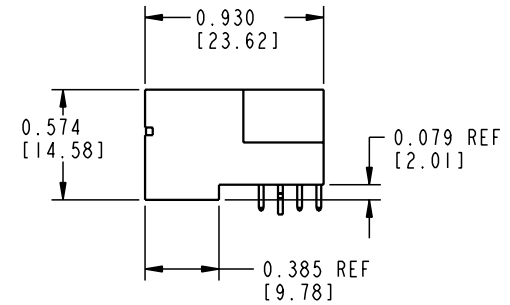
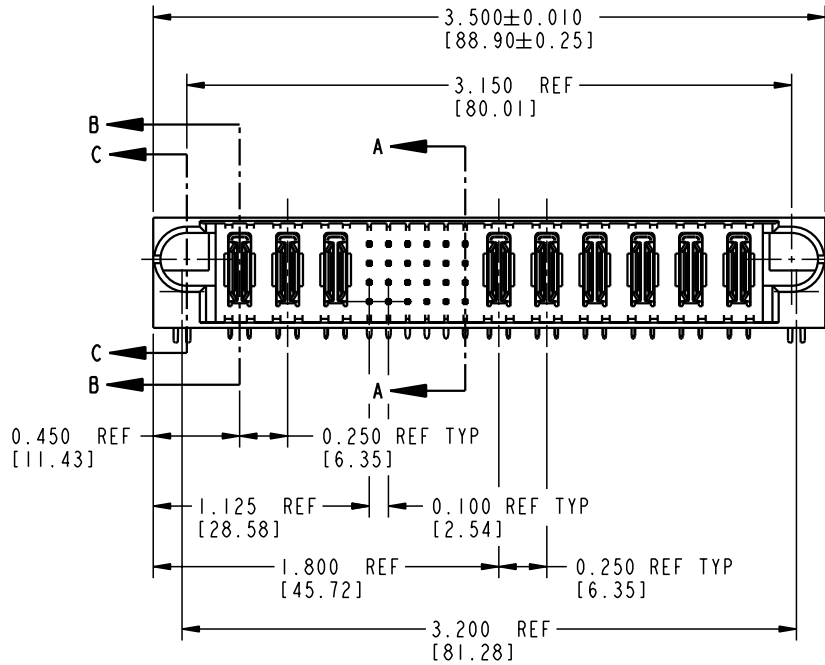


Tous droits strictement réservés. Reproduction ou communication ou des tiers interdite sous quelque forme que ce soit sans autorisation écrite du propriétaire. Propriété de c FCI. Droits de reproduction FCI.

All rights strictly reserved. Reproduction or issue to third parties in any form whatever is not permitted without written authority from the proprietor. Property of FCI. Copyright FCI.



PRODUCT No.	ROWS	POWER			SIGNAL						POWER					E2	
		E1	P1	P2	P3	1	2	3	4	5	6	P4	P5	P6	P7		P8
51720-10302406AA	D C B A	HAL	PA	PA	PA	UUUUUU	TTTTTT	SSSSSS	RRRRRR		PA	PA	PA	PA	PA	PA	HA



CODE	CONTACT TYPE
R	SIGNAL
S	SIGNAL
T	SIGNAL
U	SIGNAL
PA	POWER
HA	HOLD-DOWN

mat'l code				SEE NOTE 1		tolerances unless otherwise specified		CUSTOMER COPY		ELECTRONICS www.fciconnect.com	
ltr	ecn no.	dr	date	linear	.XX±.01/0.XX±0.3	projection			title		
A	V12181	JRW	8/28/01	angles	.XXX±.005/0.XX±0.13			3P + 24S + 6P RIGHT ANGLE SOLDER HEADER			
				dr	J. WITMER 8/28/01	INCH/MM		product family		code	
				engr	J. ALLISON 8/28/01	scale		PwrBlade		213	
				chr	J. ALLISON 8/28/01	1:1		size		sheet	
				appd	J. ALLISON 8/28/01			A		1 OF 2	
sheet index		revision sheet		A	A						
1		2									

Pro/E

cage code 22526

PDM: Rev:A

STATUS: Released

Printed: Aug 12, 2007

Tous droits strictement réservés. Reproduction ou communication o des tiers interdite sous quelque forme que ce soit sans autorisation écrite du propriétaire. Propriété de c FCI. Droits de reproduction FCI.



All rights strictly reserved. Reproduction or issue to third parties in any form, whatever is not permitted without written authority from the proprietor. Property of FCI. Copyright FCI.

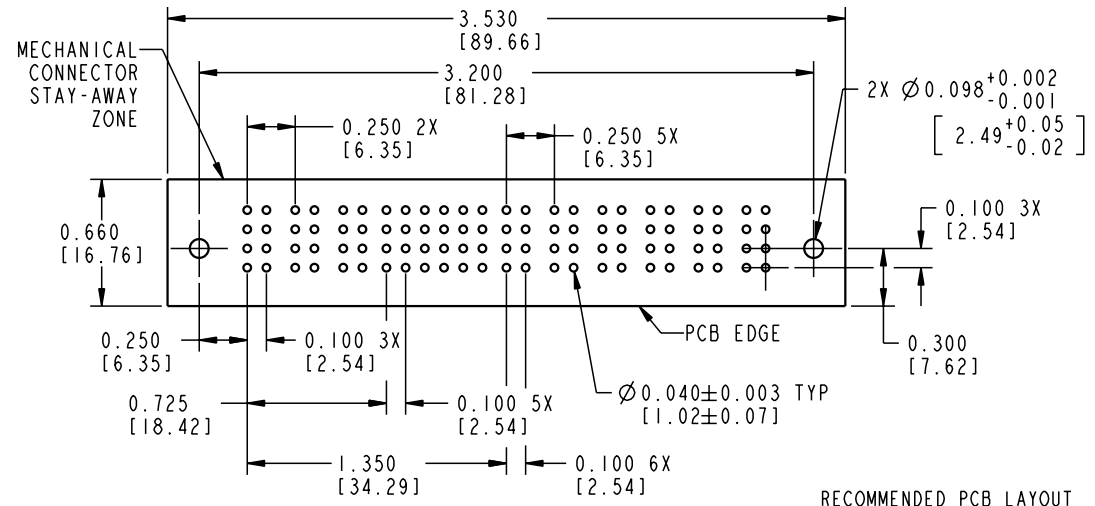
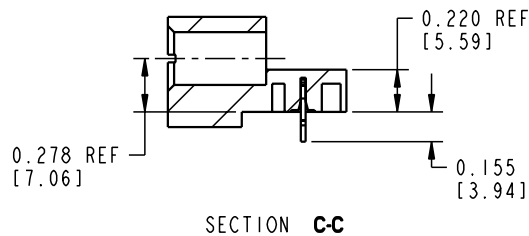
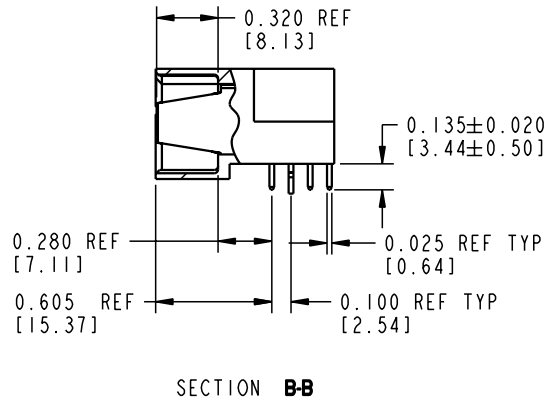
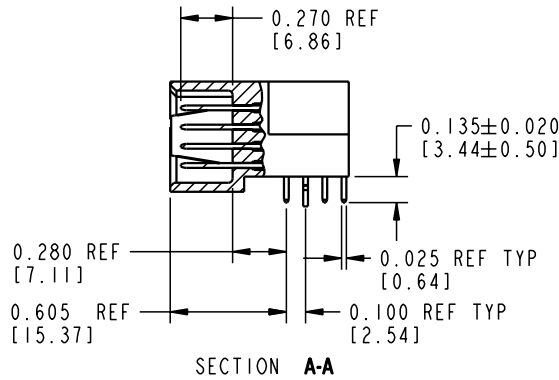
PRODUCT NUMBER
51720-10302406AA

CONNECTOR NOTES:

- HOUSING MATERIAL: UL 94 V-0 GLASS FILLED HIGH TEMP THERMOPLASTIC
POWER CONTACT MATERIAL: COPPER ALLOY
SIGNAL CONTACT MATERIAL: COPPER ALLOY
- PLATING:
SIGNAL PINS: 30u"/0.76u Au OVER 50u"/1.27u Ni
POWER CONTACTS: 50u"/1.27u Ni UNDER ALL;
WITH 30u"/0.76u Au ON CONTACT AREA
AND SnPb ON PCB INTERFACE
- "MANUFACTURER'S" NAME, P/N, AND DATE CODE TO APPEAR ON THIS SURFACE
- PRODUCT SPECIFICATION GS-12-149

PCB NOTES:

- ALL DIMENSIONS ARE BASIC UNLESS OTHERWISE SPECIFIED.
- ALL THROUGH HOLES ARE LOCATED WITH A TRUE POSITION OF 0.004 [0.10]
- ALL HOLE DIAMETERS ARE FINISHED HOLE SIZE
- Ø0.126[3.20] THROUGH HOLES ARE UNPLATED.
- Ø0.0453±0.0010 [1.151±0.025] DRILLED HOLES PLATED WITH 0.0003 [0.008] MIN SnPb OVER 0.001 [0.03] TO 0.003 [0.08] Cu PLATING TO ACHIEVE A Ø0.040±0.003 [1.02±0.07] HOLE.



mat'l code				SEE NOTE 1		tolerances unless otherwise specified		CUSTOMER COPY		FCI ELECTRONICS www.fciconnect.com	
ltr	ecm no.	dr	date	linear	.XX±.01/0.X±0.3	projection	title		3P + 24S + 6P		
A				angles	.XXX±.005/0.XX±0.13	INCH/MM	RIGHT ANGLE SOLDER HEADER		product family	PwrBlade	code
				dr	.XXX±.0020/0.XXX±0.051	scale	1:1		size	dwg no	sheet
				engr	0°±				A	51720-10302406AA	2
				chr							
				appd							
sheet index	revision sheet										

Pro/E

3

cage code 22526

4

PDM: Rev:A

STATUS: Released

Printed: Aug 12, 2007